



jordan fishwick

WEST DIDSBURY
Glenmore Avenue



Glenmore Avenue, West Didsbury, M20 2XJ

£190,000



The Property

A well presented, two double bedroom, first floor apartment in West Didsbury with easy access to both Burton Road and Princess Parkway. Presented to a high standard throughout and boasting both gas central heating and uPVC double glazing, the living space in outline comprises:- Private entrance, entrance hall, good sized lounge/dining room, kitchen, two double bedrooms, and a bathroom with white suite. Externally, there are large private gardens to the side of the property. No chain.

Directions

M20 2XJ



- First floor apartment
- Two double bedrooms
- Gas central heating
- Large gardens
- No chain
- Close to transport links
- Double glazing
- Popular location
- No onward chain

Postcode - M20 2XJ

EPC Rating -

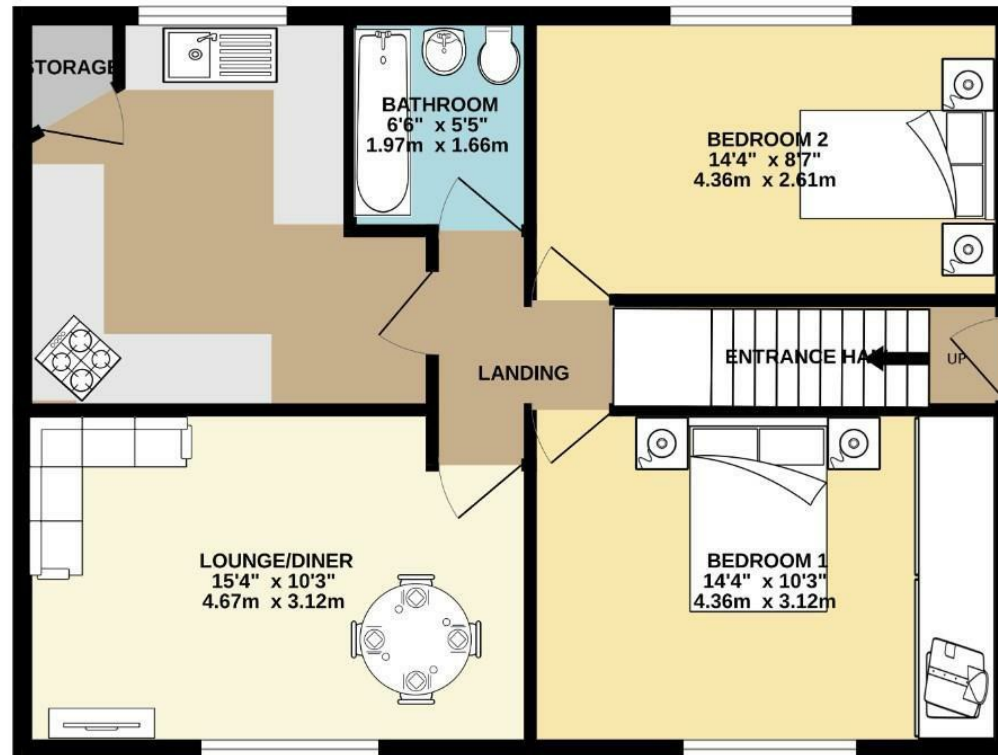
Floor Area - 654.00 sq ft

Local Authority - Manchester City Council

Council Tax - A



GROUND FLOOR
654 sq.ft. (60.8 sq.m.) approx.



TOTAL FLOOR AREA : 654 sq.ft. (60.8 sq.m.) approx.
Measurements are approximate. Not to scale. Illustrative purposes only.
Made with Metropix ©2025



These particulars are believed to be accurate but they are not guaranteed and do not form a contract. Neither Jordan Fishwick nor the vendor or lessor accept any responsibility in respect of these particulars, which are not intended to be statements or representations of fact and any intending purchaser or lessee must satisfy himself by inspection or otherwise as to the correctness of each of the statements contained in these particulars. Any floorplans on this brochure are for illustrative purposes only and are not necessarily to scale.

Offices also at: Wilmslow, Macclesfield, Hale, Sale, Chorlton, Glossop, Manchester & Salford

757-759 Wilmslow Road, Didsbury Village, Manchester

0161 445 4480

didsbury@jordanfishwick.co.uk
www.jordanfishwick.co.uk